

OPENING SOLUTIONS

12
YEAR GUARANTEE

austenitic
304

OPENING SOLUTIONS



Worldwide, Securistyle is recognised for setting the standards in hardware. Those standards reflect our commitment to quality in design, manufacture and performance. Our in-depth understanding of the markets in which we operate means that we anticipate the growing requirements in each sector, continue to develop a range of versatile products which comply with the latest legislation and provide real value.

Our Mission...

"It is only by consistently developing our products and services that we will remain global leaders. Together with the whole Securistyle team, we pledge to listen to our customers, to anticipate their future needs and deliver, consistently, with a professionalism that sets us above and beyond our clients' expectations"

Paul Cook
Managing Director



LONDON
NEW YORK
BEIJING
PARIS
GENEVA
MILAN
SYDNEY
HONG KONG



BSEN ISO9001
Cert No Q05105

12
YEAR GUARANTEE



INVESTORS IN PEOPLE

TEST FACILITY

TYPE

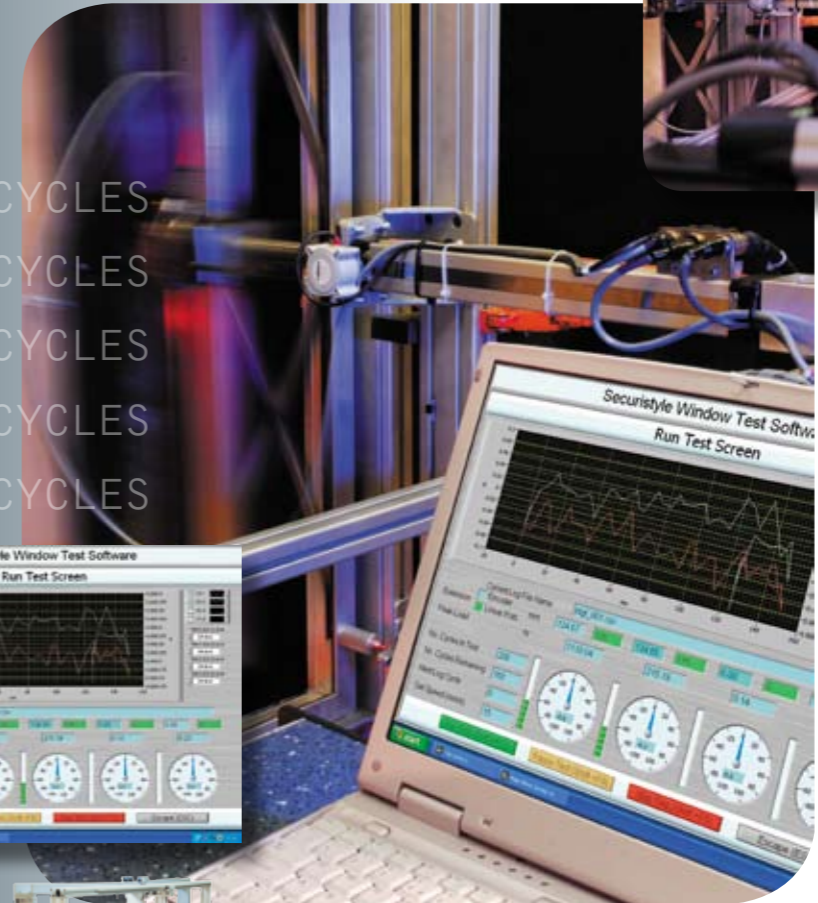
**AUTOMATED CONTINUOUS
PRODUCT TESTING**

BENEFIT

*Confidence in products tested
and fit for purpose*



10,000 CYCLES
15,000 CYCLES
20,000 CYCLES
25,000 CYCLES
30,000 CYCLES



TEST FACILITY

Securistyle's new world class test facility for the testing of project out vents is capable of testing any configuration of vents up to and including 3 metres square.

Vents may be endurance tested up to the full life expectancy of the product, and beyond, to any opening distance within the product specification.

Sophisticated data collection software has been employed for the recording of opening and closing forces of the vent throughout the life cycle of the product.

The acquired data can be converted to graph format for inclusion in product specification details or test reports for presentation to architects, façade and systems companies etc.

RIG SPECIFICATION

- 3 metres x 3 metres
- Maximum linear drive 300 mm
- Capable of testing windows in excess of 500 kg's



12 OPENING SOLUTIONS

TESTED TO DESTRUCTION
Performance



PARALLEL HINGE

TYPE

HEAVY DUTY PARALLEL HINGE SYSTEM

BENEFIT

Aesthetically pleasing sightlines, maintaining the reflective qualities, with built-in safety features

Windows equipped with Parallel Plus provide the ultimate in natural ventilation by providing a balanced air flow around the entire opening.

- Provides adequate, draught free ventilation when opened to only 40mm
- Small opening gap ensures greater security for occupants
- Can be operated manually up to 200kg*
- Sash adjustment feature to correct parallelism on tall or heavy vents
- Tested in excess of 30,000 fully open cycles
- Made from high grade (304) Austenitic stainless steel for maximum performance in the most corrosive environments
- Can be connected to a building management system
- Full technical and sales support available
- 12 year guarantee, terms and conditions apply

Austenitic (304) stainless steel to BS EN ISO 10088/2 Grade 1.40301 for enhanced corrosion resistance.
*Depending on window configuration.

PARALLEL HINGES



RUSHMORE HINGE

TYPE

EXTRA HEAVY DUTY HINGE SYSTEM

BENEFIT

Significantly enlarged glazed area up to 4.2 metres high



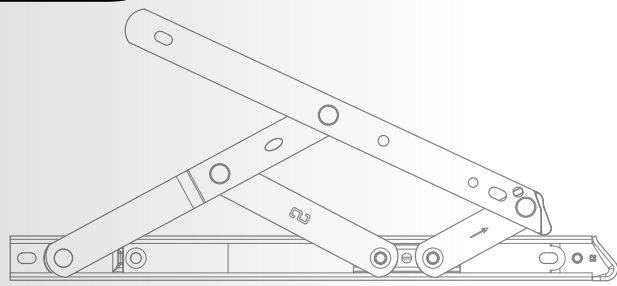
austenitic
304

The Rushmore is constructed in robust 304 grade austenitic steel - quality built to last.

- The Rushmore hinge is specifically designed for large openings in curtain walling
- Significantly enlarged glazed openable area made possible by the Rushmore means fewer broken sightlines
- Each window must be either mechanically or motor driven to control opening and closing
- Helps provide natural ventilation or smoke release in commercial buildings
- Easily copes with top or bottom hung vents of 350kg and 4.2 metres high
- Bottom hung windows without motor requires 1 pair of gas pressure springs
- Tested to 10,000 cycles
- 12 year guarantee, terms and conditions apply

RUSHMORE HINGES

OPENING SOLUTIONS
Product Range



STERLING
HINGES

STERLING HINGE

TYPE

HEAVY DUTY FRICTION HINGE

BENEFIT

Proven up to 30,000 full cycles and conforms to all international standards



- Self-balancing hinge
- Capable of achieving all leading international standards, including the UK BS 6375; the North American AAMA 904.1; and the Singapore Standard 212:2004
- Unrivalled weather sealing
- Made from high grade (304) Austenitic stainless steel for maximum performance in the most corrosive environments
- 12 year guarantee, terms and conditions apply

Note:

As with all types of friction hinges, friction can not be provided until the slider moves, therefore when limiting the opening of top hung vents to angles of 10° or less, additional device(s) will be required to enable them to remain in a selected ventilation position.

Austenitic (304) stainless steel to BS EN ISO 10088/2 Grade 1.40301 for enhanced corrosion resistance.

OPENING SOLUTIONS
Product Range

CASE STUDY
1

PROJECT	MORELONDON	
LOCATION	LONDON, UK	
ARCHITECT	FOSTER & PARTNERS	
SYSTEM COMPANY	PERMASTEELISA	
PRODUCTS USED	RUSHMORE	

BRIEF OVERVIEW

13 acres on the south bank of the Thames, with views facing the Tower of London. More London presented a fantastic opportunity to create a new style of working community within Central London.

The vision; to create an environment where people would love to work - an environment others would wish to visit and use. Great light and a sense of space add to the energy and improved way of life.



CASE STUDY 2

PROJECT NAME	GRAND HYATT HOTEL
LOCATION	GARHOUD - DUBAI
ARCHITECT	ARKITECNIC
SYSTEM COMPANY	ALICO - SHARJAH
PRODUCTS USED	PARALLEL



BRIEF OVERVIEW

Dubai's newest luxury hotel, Grand Hyatt Dubai, towers majestically by the edge of Dubai's historic creek. The hotel has an outstanding combination of resort facilities and luxury hotel guest rooms and suites, all set within a lush oasis of 37 acres of landscaped gardens.

CASE STUDY 3

PROJECT NAME	MINISTRY OF EDUCATION
LOCATION	BUONA VISTA RD - SINGAPORE
ARCHITECT	CPG CONSULTANTS (S) PTE LTD
SYSTEM COMPANY	DEITHELM INDUSTRIES PTE LTD
PRODUCTS USED	STERLING



BRIEF OVERVIEW

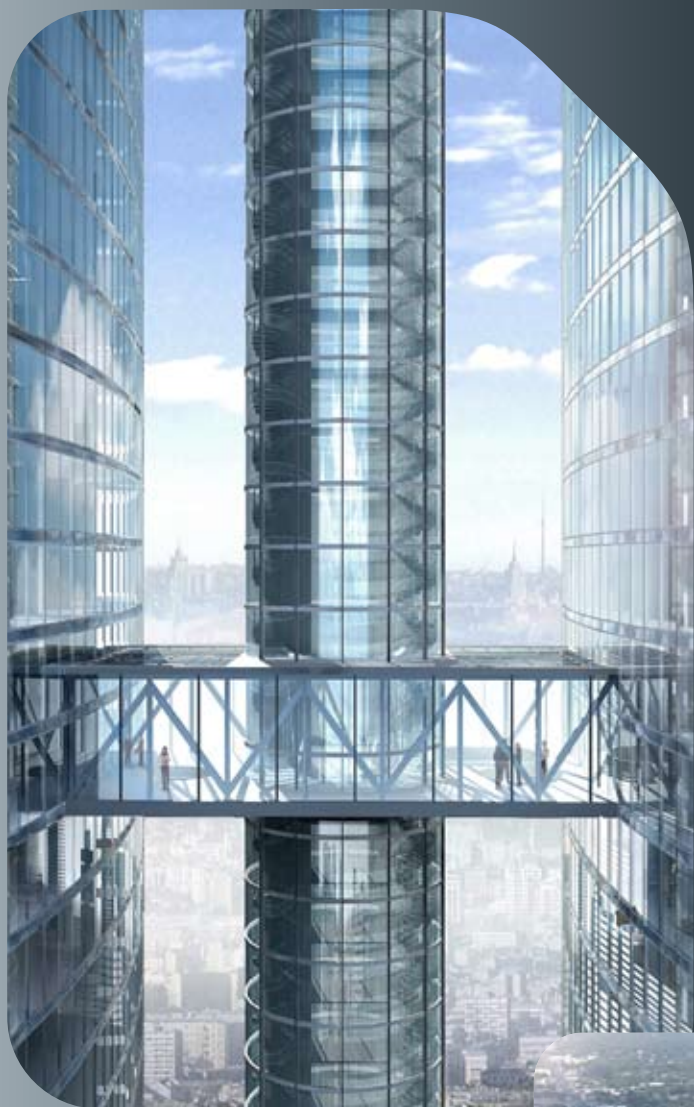
Designed as a modern, tropical, high-rise office building with a series of recesses and sun-shading louvres, pergolas and trellises, the building has won the Singapore Institute of Architects Façade design Excellence Award. It was also awarded the Institute of Engineers Singapore Engineering Achievement Award for its energy-saving design and improvement to indoor air quality.

Securistyle's Sterling hinges have been fitted in this 24-storey tower block which is interconnected with a five-storey podium block with four basements around an open courtyard.



CASE STUDY 4

PROJECT NAME	FEDERATION TOWER	
LOCATION	MOSCOW, RUSSIA	
ARCHITECT	SCHWEGER & PARTNERS AND NPS TCHOBAN VOSS	
SYSTEM COMPANY	YUAN DA	
PRODUCTS USED	PARALLEL	



BRIEF OVERVIEW

The Federation Tower is a skyscraper complex currently under construction in Moscow, Russia and is designed to be both the tallest building in Europe as well as Europe's first "supertall" building. The Federation Tower complex is divided into three towers with Global Hyatt Corporation utilizing over half of towers A and B. The total construction cost for the complex is estimated to be US\$ 530 million.



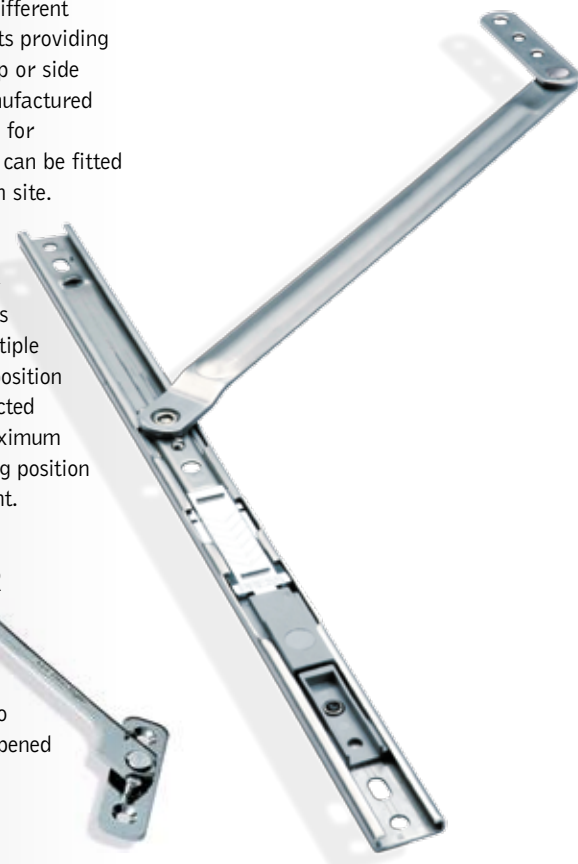
ARCHITECTURAL

RESTRICTORS

Securistyle can offer a variety of different restrictors to suit your requirements providing you with restricted openings for top or side hung vents. All restrictors are manufactured from Austenitic 304 stainless steel for enhanced corrosion resistance and can be fitted either during vent fabrication or on site.

STAY OPEN RESTRICTOR

Restricts maximum opening of vents plus prevents closure of vent in multiple positions. Locks in fully restricted position and remains in position when subjected to wind gusts up to 1.5k N/m². Maximum restriction is controlled by the fitting position of the product on the frame and vent.



CAVITY FIT RESTRICTOR

Suitable for occupier manual release and self-relocates to restricted opening when vent is closed. Tested to BS6375 Part 2 to withstand a force of 600N when opened at the restricted position.



FIXED RESTRICTOR

These are permanent restrictors that will restrict vents whilst also providing additional friction control for frame movement.

DETACHABLE RESTRICTORS

key release restrictor stay for use with sterling and storm commercial hinges and tested to BS 6375 part 2 to withstand a force of 600n when opened at the restricted position.



ADJUSTMENT BLOCKS

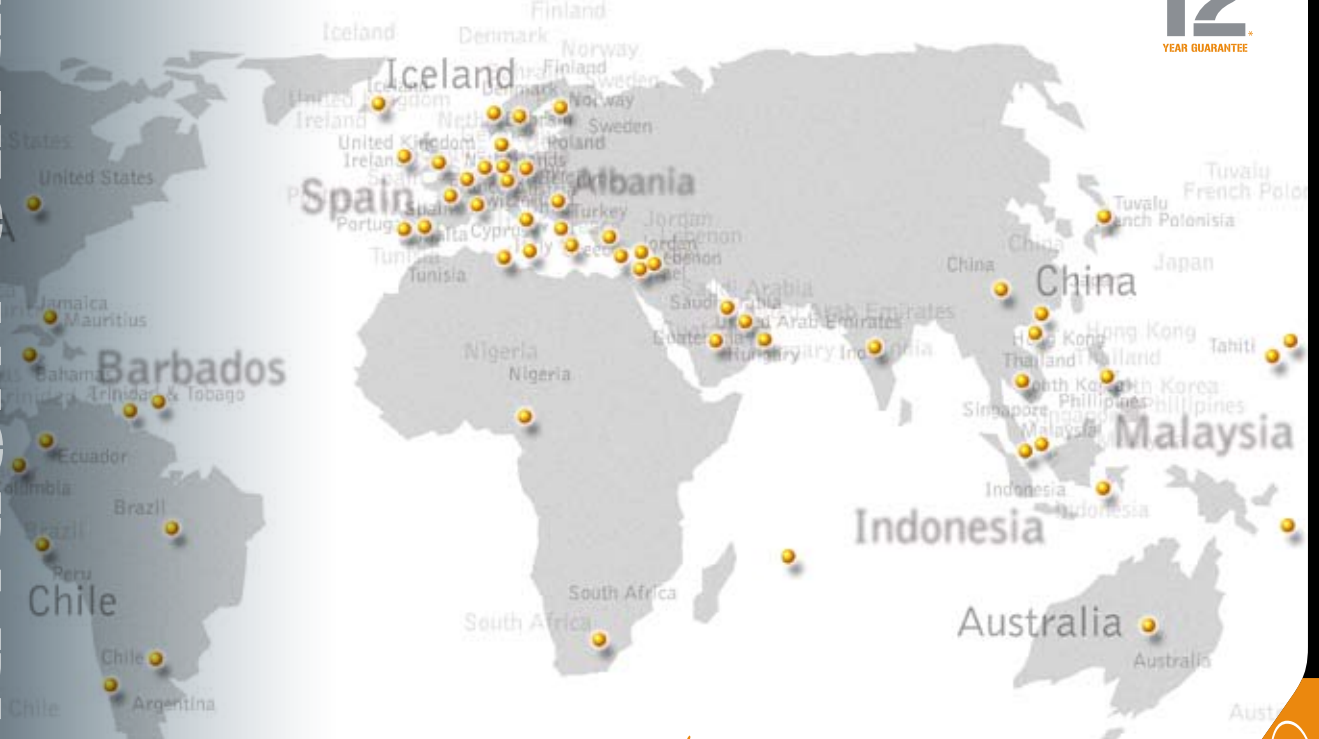
Optional cam adjustment device for +/- 2mm vertical adjustment by simple allen key operation. Suitable for use with all Securistyle commercial hinges this product provides easy alignment of heavy vents on site.



PULL-IN BLOCKS

Pull-In Blocks will maintain an effective weather seal throughout the operating life of the vent. Optimisation of the compression can be achieved by means of the adjustable frame component. Pull-In Blocks will also reduce profile bow on large vents when subjected to negative wind loads.





securistyle

With a commitment to product innovation and development, investment in people and specification requirements, Securistyle now exports its products across the world with projects in Asia, North and South America and Europe.

Securistyle remains successful in this sector by providing high quality window solutions that fulfil the requirements and demands of large-scale commercial developments and that meet Central European Standards (CES) and leading international standards.



12
YEAR GUARANTEE



ADDITIONAL TECHNICAL DATA FOR THESE PRODUCTS CAN BE OBTAINED FROM SECURISTYLE PLEASE CALL: 01242 221200
or E-mail: technicalmail@securistyle.co.uk



Securistyle Ltd
Kingsmead Industrial Estate, Princess Elizabeth Way
Cheltenham, Gloucestershire GL51 7RE, UK
Tel: +44 (0) 1242 221200
Fax: +44 (0) 1242 228194 / 520828
E-mail: info@securistyle.co.uk
Website: www.securistyle.co.uk

Due to our policy of continual improvement we reserve the right to alter specifications without notice. It is the responsibility of the window manufacturer to ensure that the finished window meets the required performance and safety specification.

All transactions are subject to our standard conditions of supply, which are available on request.

* Conditions apply.

SECURISTYLE WORLDWIDE
Global Service

**PARALLEL PLUS**

TYPE

**HEAVY DUTY PARALLEL
HINGE SYSTEM**

BENEFIT

Aesthetically pleasing sightlines,
maintaining the reflective qualities,
with built-in safety features

**Parallel Plus - A Natural Ventilation Break
Through**

The increasing demand for balanced and effective natural ventilation, whilst maintaining a safe and secure environment requires a highly innovative solution.

Securistyle Limited, the World's leading provider of parallel opening solutions in curtain walls (such as Federation Tower in Moscow shown below) launched the definitive solution to this problem in October 2007.

**Unique features of the Parallel Plus
Operating system:**

- Vents weighing up to 180kg can be manually operated.
- Significant cost saving on motor operators.
- Parallel Plus vents can be restricted to 40mm openings and still provide whole perimeter ventilation and effective air exchange. (Tested and proven at the BRE)
- Provides a safe, secure and well ventilated environment.
- Air exchange equivalent to conventional window operating systems open to 100mm or more.
- Adjustable parallelism.
- Compensates for building and façade tolerances.
- High resistance to corrosion.
- Manufactured from 304 grade austenitic stainless steel.



austenitic
304

**PARALLEL PLUS HINGES****Securistyle Ltd**

Kingsmead Industrial Estate, Princess Elizabeth Way
Cheltenham, Gloucestershire GL51 7RE, UK

Rev 5 Mar 2008

Tel: +44 (0) 1242 221200

Fax: +44 (0) 1242 228194/520828

E-mail: info@securistyle.co.uk
Website: www.securistyle.co.uk

NEW
ENHANCED

STERLING

Superior window
balancing

STERLING

HEAVY DUTY
FRICTION HINGES FOR
COMMERCIAL
APPLICATIONS

- Self-balancing hinge
- Capable of achieving all leading international standards, including the UK BS 6375; the North American AAMA 904.1; and the Singapore Standard 212:2004
- Unrivalled weather sealing
- Austenitic stainless steel for enhanced corrosion resistance
- Superior Carrying Capacity
- 12 year guarantee (details available upon request)

High performance components are used throughout Securistyle's hinge range. This investment results in a reliability of operation which is unequalled in the industry. Sterling has been proven up to 30,000 full cycles and conforms to all leading international standards.

Full technical and sales support which will cover consultancy per project basis and on-site advice when necessary.



◀ **NEW REDESIGNED END POINT & VENT ARM**

Gust load resistance improved via redesigned end point and vent arm. Testing at ATi (USA) reported increased gust load resistance <135psf/6470pa.



▲ **NEW DIE CAST ZINC ALLOY PIVOT BLOCK**

Pivot block locates and supports 3rd link pivot providing increased bearing surface reducing vent drop throughout products guaranteed 30,000 cycles.



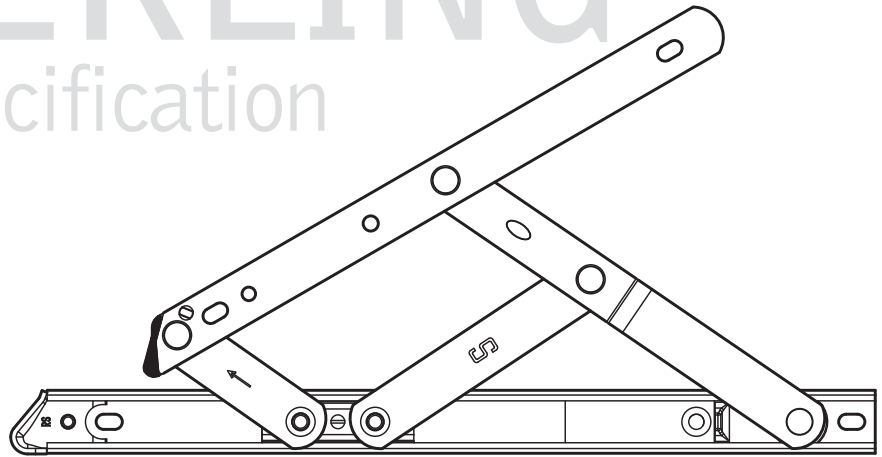
◀ **PULL IN BLOCK**

Maintains effective weather seal and reduces bowing on large vents.



STERLING

Product Specification



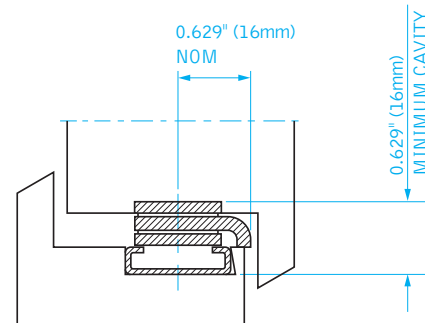
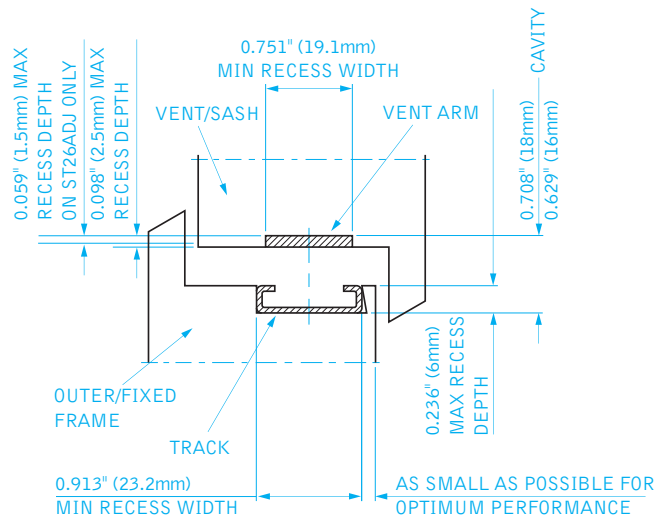
PRODUCT SPECIFICATION

- Anti-rubbing composite slider eliminates metal to metal contact and helps prevent vent drop
- Carries commercial vents from 0.3m to 2.5m high, up to 180kg in weight
- Adjustable opening stop on top hung hinges
- Available in 10" to 26" top hung and 10" & 16" side hung
- 10" and 16" side hung open beyond 80° for easy cleaning of windows
- The SPTH16 has been designed to specifically meet the growing trend for low height extra wide heavy windows.

OPTIONAL FEATURES

- Add on adjustment device

Note: As with all types of friction hinges, friction can not be provided until the slider moves, therefore when limiting the opening of top hung vents to angles of 10° or less, additional device(s) will be required to enable them to remain in a selected ventilation position.



NOTE ADDITIONAL LINK FORM ON SPTH16 AND SPT22W AND SPT26.

STERLING

Hinge Code	Hinge Length (in/mm)	Max Vent Weight (lb/Kg)	Max Vent Height (in/mm)	Min Vent Height (in/mm)	Opening Angle (+/- 2.5°)	Number of cycles ('000's)
SPT10	10/262	88/40	25.0/640	10.5/267	50°	30
SPT12	12/313	110/50	31.5/800	25.2/640	50°	30
SPT16/W	16/415	143/65	43.3/1100	31.5/800	50°	30
SPTH16*	16/415	220/100	43.3/1100	23.6/600	30°	30
SPT22*	22/567	220/100	59.0/1500	42.9/1090	45°	30
SPT22W*	22/567	220/100	78.7/2000	59.0/1500	20°	30
SPT26*	26/680	397/180	98.4/2500	78.7/2000	20°	30
Side Hung			Max Vent Width	Min Vent Width		
SPS10	10/262	83/38	26.0/660	11.8/300	85°	30
SPS16	16/415	103/47	33.0/838	17.7/450	90°	30

*Vents of 100kg must be fitted with S7280 cam adjustment devices, which are optional on lighter vents.

Separate restrictors (SR8 or SR16BAC pair), vent holding devices or an operating mechanism may be required to hold large vents in a selected ventilation position against variable wind pressure.



Due to our policy of continual improvement we reserve the right to alter specifications without notice. It is the responsibility of the window manufacturer to ensure that the finished window meets the required performance and safety specification.

All transactions are subject to our standard conditions of supply, which are available on request.

STORM BALANCED

Unrivalled
weather sealing

STORM BALANCED

HEAVY DUTY FRICTION
HINGES FOR COMMERCIAL
APPLICATIONS

- Self balancing hinge range
- Unrivalled weather sealing
- Capable of achieving high gust loading
- Low inventory non balancing range option
- Austenitic 304* stainless steel throughout
- Superior carrying capacity
- 12 year guarantee (details available upon request)

The Storm hinge range has been designed to exceed the requirements of AAMA 101/I.S.2 - 97, specifically high gust load rating. In addition to exceeding this high performance standard, Storm also benefits from excellent weathersealing from its unique asymmetric metal point and cap as well as smooth reliable operation.

Full technical and sales support which will cover consultancy per project basis and on-site advice when necessary.



▲ **STEEL END LOCATOR**
A stainless steel end cap automatically directs the end point smoothly and firmly towards the closed position

▼ **OPTIONAL ADJUSTMENT**
Slide-on end block for simple, accurate cam adjustment



▼ **HEAVY DUTY FRICTION SLIDERS**
Stainless steel composite sliders to give maximum strength yet perform with the smoothest of action



▼ **PULL IN BLOCK**
Maintains effective weather seal and reduces bowing on large vents.

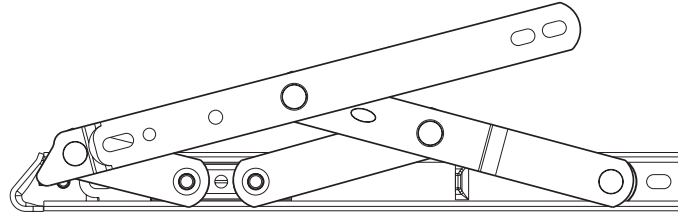


* Austenitic (was 304) stainless steel to BS EN ISO 10088/2 Grade 1.4301 for enhanced corrosion resistance.



STORM BALANCED

Product Specification



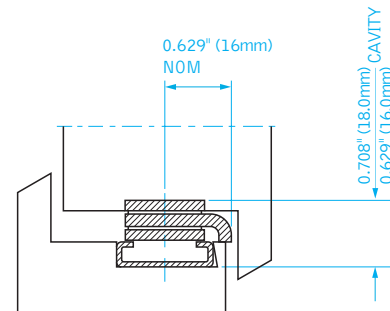
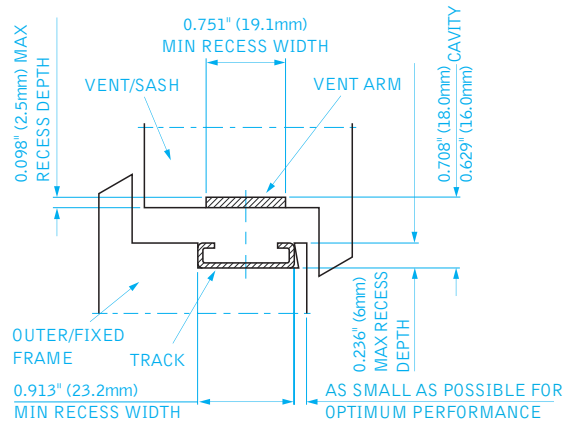
PRODUCT SPECIFICATION

- Storm Egress variant available, allowing casement windows to open to a full 90° for emergency exit
- Complies to the requirements of AAMA 904.1 - 87, 910 - 93 and 101/I.S.2 - 97)
- Available in 10", 12", 16", 22" and 26" projecting and 10" and 16" casement
- Suitable for vents 11" to 7'2" high
- Standard, offset and highline and variants available
- Composite slider
- Storm BS10 and BS16 available as loose rivet variants

OPTIONAL FEATURES

- Add on adjustment device

Note: Pivot design provides additional friction at angles of 10° or less. However, it may be necessary to fit additional separate device(s) on top hung vents to enable them to remain in a selected ventilation position.



NOTE ADDITIONAL LINK FORM ON STORMB26 HINGES ONLY.

STORM BALANCED

Hinge Code	Hinge Length (in/mm)	Max Vent Weight (lb/Kg)	Max Vent Height (in/mm)	Min Vent Height (in/mm)	Opening Angle (+/- 2.5°)	Number of cycles ('000's)
STORMB10	10/262	81/37	25.0/635	10.5/267	50°	10
STORMB12	12/313	99/45	30.9/787	25.0/635	50°	10
STORMB16	16/415	121/55	42.9/1090	30.9/787	50°	10
STORMB22	22/567	165/75	59.0/1500	42.9/1090	45°	10
STORMB26*	26/680	264/120	87.0/2200	50.0/1270	20°	10
Side Hung			Max Vent Width	Min Vent Width		
STORMBS10	10/262	83/38	26.0/665	11.0/280	80°	10
STORMBS16	16/415	103/47	33.0/838	18.0/457	90°	10

STORM EGRESS

Hinge Code	Max Vent Weight (lb/Kg)	Max Vent Width (in/mm)	Max Vent Height (in/mm)	Hinge Length (in/mm)	Opening Angle (+/- 2.5°)	Number of cycles ('000's)
STORME16	103/47	33/838	18.0/450	16.3/415	90°	10

*Vents of 100kg must be fitted with S7280 cam adjustment devices, which are optional on lighter vents.

Separate restrictors (SR8 or SR16BAC pair), vent holding devices or an operating mechanism may be required to hold large vents in a selected ventilation position against variable wind pressure.



Due to our policy of continual improvement we reserve the right to alter specifications without notice. It is the responsibility of the window manufacturer to ensure that the finished window meets the required performance and safety specification.

All transactions are subject to our standard conditions of supply, which are available on request.

DEFENDER

Tough with high performance

DEFENDER STANDARD

STANDARD PURPOSE FRICTION HINGE

- Extended enclosed end cap to enhance weather sealing
- Long and reliable working life tested to 30,000 cycles
- Asymmetric location system for reliable weather sealing to BS6375 Part 1
- Patented lipped slider for enhanced smooth operation
- Handed 'profiled' vent arm further enhancing weather seal
- Easy friction adjustment without metal to metal contact
- Unique patented, robust cam friction device eliminates any risk of friction screw misuse
- Available in ferritic 430* as standard or austenitic 304* stainless steel for enhanced corrosion resistance
- Available with built in restrictors
- 10 year guarantee (details available upon request)



▼ SMOOTH OPERATION
Thermoplastic components for long life



▼ LONG LIFE
Defender and Vector hinges have been proven to 30,000 full cycles



▼ NEW TIMBER VARIANT NOW AVAILABLE**



* Standard Ferritic (was 430) steel to BS EN ISO 10088/2 Grade 1.4016 or Austenitic (was 304) stainless steel to BS EN ISO 10088/2 Grade 1.4301 for enhanced corrosion resistance.



DEFENDER

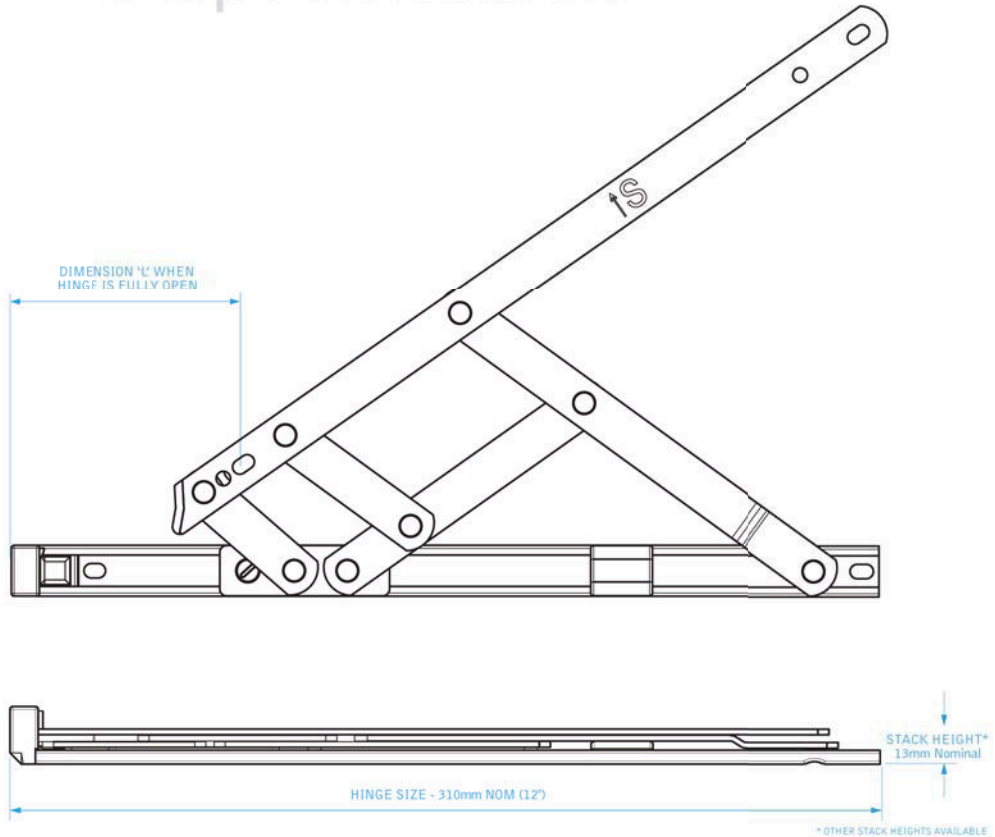
Product Specification

PRODUCT SPECIFICATION

- Slot hole slot format will provide the ability to adjust the vent more easily
- Increased carrying capacity on 20" and 24" top hung hinges
- Defender Highline variants for deeper profiles with cavities between 16mm and 18mm
- Defender Slimline; engineered for narrower hardware channels
- Drilling jigs for all sizes are available to order
- To meet the ever increasing demand for larger windows the EDTH24 is available for large heavy top hung vents.

Note: As with all types of friction hinges, friction cannot be provided until the slider moves, therefore when limiting the opening of top hung vents to angles of 10° or less, a separate device will be required to prevent the window from closing.

When fitting the EDTH24 and its variants, pull in blocks/locking wedges/snubbers must be fitted 100mm from each corner and then across the top as required to aid weather sealing.



DEFENDER STANDARD

Hinge Size (Top Hung) (in/mm)	Max Vent Weight (lb/Kg)	Max Vent Height (in/mm)	Min Vent Height (in/mm)	Hinge Dimension 'L' (in/mm)	Opening Angle (+/- 2.5°)
6/159	22/10	12/300	6/150	2.48/63	50°
8/209	26/12	14/350	8/200	4.69/119	65°
10/259	35/16	16/400	11/275	5.15/131	80°
12/310	44/20	22/550	14/350	6.45/164	80°
16/412	46/21	29/780	20/500	9.4/239	80°
20/513	57/26	43/1100	27/700	8.46/215	50°
24/615	88/40	51/1300	33/850	6.14/156	37.5°
H24/615	110/50	59/1500	33/850	6.14/156	27°
Hinge Size (Side Hung)	Max Vent Width	Min Vent Width			
8/209	39/18	15.7/400	8/200	7.20/183	65°
12/310	48/22	23.6/600	12/300	6.77/172	60°
16/412	53/24	27.6/700	16/400	6.69/170	60°



Due to our policy of continual improvement we reserve the right to alter specifications without notice. It is the responsibility of the window manufacturer to ensure that the finished window meets the required performance and safety specification.

All transactions are subject to our standard conditions of supply, which are available on request.

** Timber variant only available in 13mm stack height in ferritic 430* and austenitic 304* stainless steel.

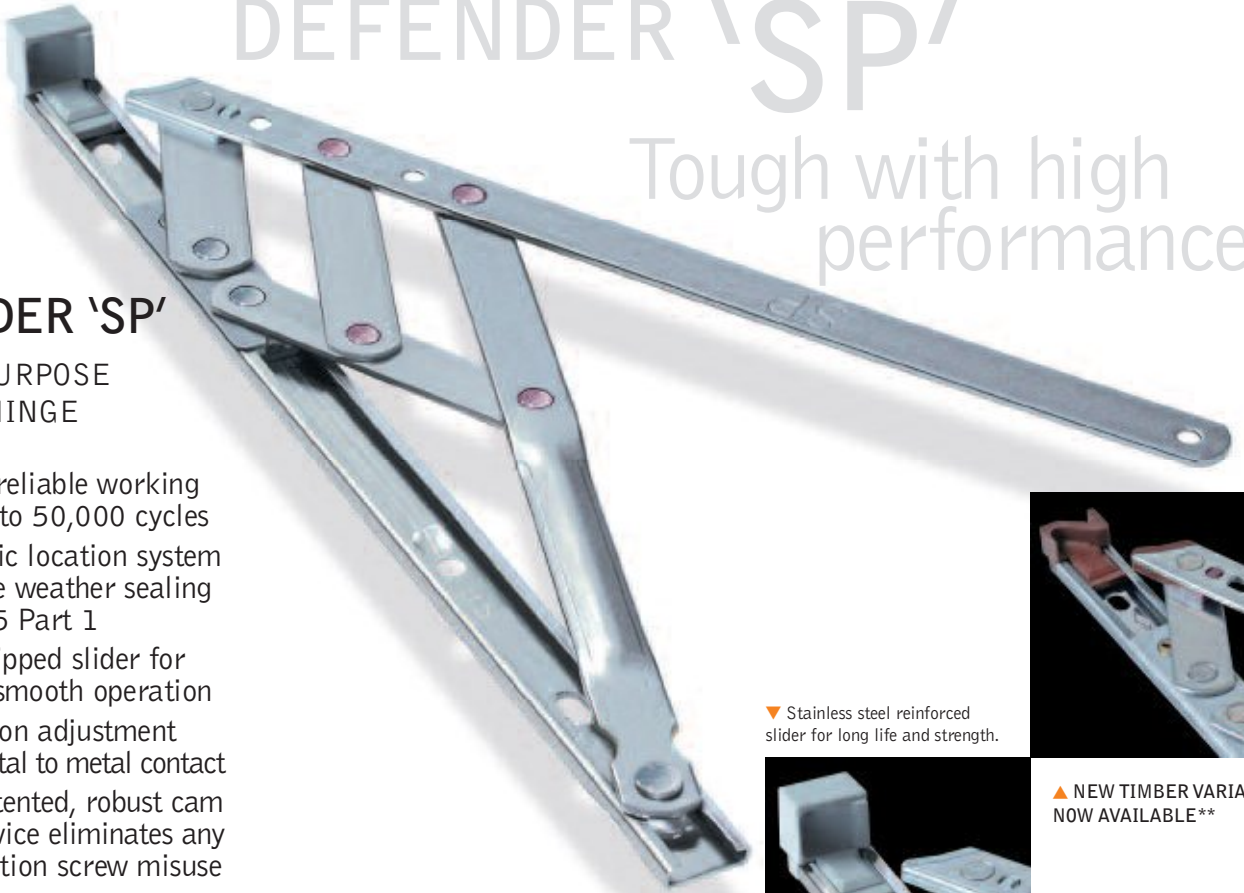
DEFENDER 'SP'

Tough with high performance

DEFENDER 'SP'

SPECIAL PURPOSE FRICTION HINGE

- Long and reliable working life tested to 50,000 cycles
- Asymmetric location system for reliable weather sealing to BS6375 Part 1
- Patented lipped slider for enhanced smooth operation
- Easy friction adjustment without metal to metal contact
- Unique patented, robust cam friction device eliminates any risk of friction screw misuse
- Austenitic 304 stainless steel for enhanced corrosion resistance
- Up to 90° opening
- Available with built in restrictors
- 10 year guarantee (details available upon request)



▼ Stainless steel reinforced slider for long life and strength.



▲ NEW TIMBER VARIANT NOW AVAILABLE**

DEFENDER ROTOWINDER

DEFENDER ROTOWINDER

SPECIAL PURPOSE FRICTION HINGE

- Long and reliable working life tested to 30,000 cycles
- Asymmetric location system for reliable weather sealing to BS6375 Part 1
- Patented lipped slider for enhanced smooth operation
- Easy friction adjustment without metal to metal contact
- Unique patented, robust cam friction device eliminates any risk of friction screw misuse
- Austenitic 304 stainless steel for enhanced corrosion resistance



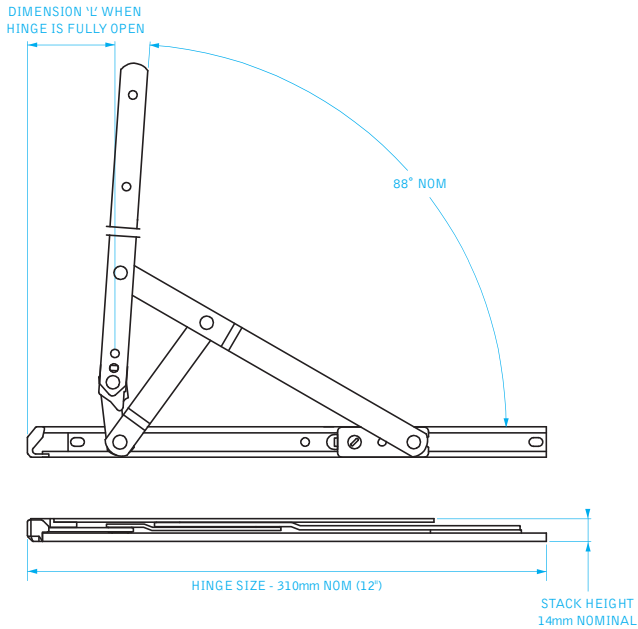
▼ SMOOTH OPERATION
Thermoplastic components for long life.



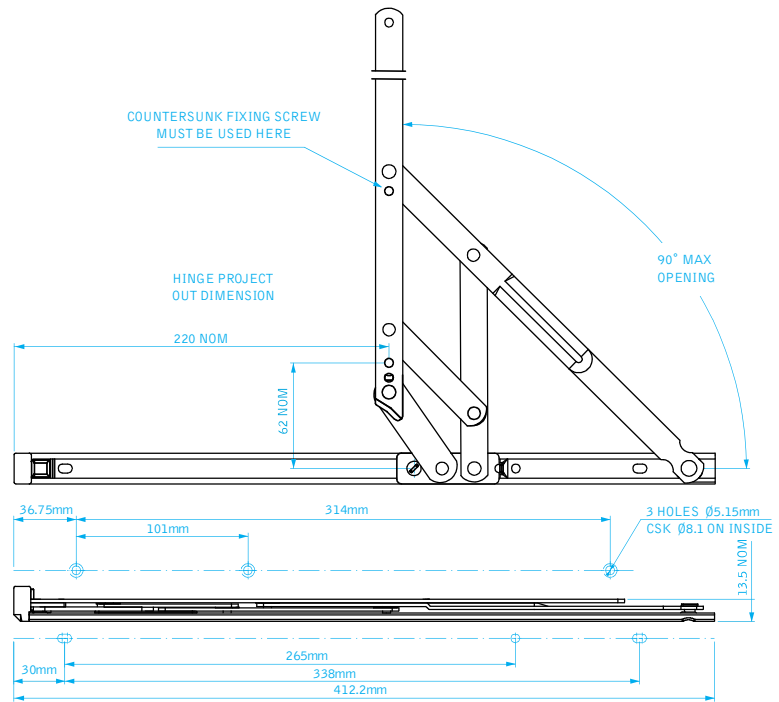
▼ WORLD'S BEST!
The Defender is the World's best selling friction hinge.



Product Specifications



ROTOWINDER



DEFENDER 'SP'

PRODUCT SPECIFICATIONS

DEFENDER 'SP'

Hinge Code (Side Hung)	Max Vent Weight (lb/Kg)	Min. Vent Width (in/mm)	Max. Vent Width (in/mm)	Hinge Dimension 'L' (in/mm)	Restricted Angle (+/- 2.5°)	Opening Angle (+/- 2.5°)	TEST STANDARD
EDCSM12A-SP	46.3/21	11.8/300	23.6/600	5.1/131	-	90°	SISIR 212: 1988 &
EDCSR12A-SP	35.3/16	11.8/300	27.6/700	4.8/122	17°	83°	AAMA 904.1: 1987 & BS 6375 Pt 2
EDCSM16A-SP	52.9/24	15.7/400	35.4/900	8.6/220	-	90°	SISIR 212: 1998
EDCSR16A-SP	52.9/24	15.7/400	35.4/900	8.1/206	12.5°	83°	AAMA 904.1 : 1987 & BS 6375 Pt 2
EDCSM16A-SP	66.1/30	15.7/400	35.4/900	8.6/220	-	90°	AAMA 904.1: 1987 & BS 6375 Pt 2
EDCSR16A-SP	66.1/30	15.7/400	35.4/900	8.1/206	12.5°	83°	AAMA 904.1: 1987 & BS 6375 Pt 2
EDSM16HA-SP	66.1/30	15.7/400	35.4/900	8.6/220	-	90°	AAMA 904.1: 1987 & BS 6375 Pt 2

ROTOWINDER

Hinge Code (Side Hung)	Max Vent Weight (lb/Kg)	Min. Vent Width (in/mm)	Max. Vent Width (in/mm)	Hinge Dimension 'L' (in/mm)	Restricted Angle (+/- 2.5°)	Opening Angle (+/- 2.5°)	TEST STANDARD
DS12W2	44.1/20	11.8/300	22.3/600	2.0/52	-	88°	AAMA 904.1: 1987 & BS 6375 Pt 2

Note: Vent width is measured from rebate to rebate (not overall size or outer frame size) on conventional windows or glass size on structurally glazed windows e.g. curtain wall panels whichever is the greater dimension. For maximum vent height consult profile manufacturers for recommendations on requirements of system strength and sealing.

Note: Above sizes/weights also apply to DS12CASP15 (Highline).

Note: For slim aluminium systems these vent sizes may need to be reduced on restricted hinges to comply with a maximum restricted opening of 100mm. See chart in restricted section.

*When fitting DSR12CASP & DSR16CASP a pair of restricted hinges must be fitted i.e. top and bottom of window, to achieve SISIR 212: 1988 & BS6375 Pt. 2

** Timber variant only available in 13mm stack height in ferritic 430* and austenitic 304* stainless steel.



Due to our policy of continual improvement we reserve the right to alter specifications without notice. It is the responsibility of the window manufacturer to ensure that the finished window meets the required performance and safety specification.

All transactions are subject to our standard conditions of supply, which are available on request.

DEFENDER EGRESS



Friction hinge for emergency exit

DEFENDER EGRESS

FRICITION HINGE FOR EMERGENCY EXIT WITH EASY CLEANING FACILITY

- **New Self Lubricating PTFE based coating** on end cap provides smooth closing
- Allows casement windows to open to a full 90° for emergency exit to comply with the British Standard BS5588 Part 1: 1990 and Building Regulations Approved Document B for fire escape windows ▲
- **New Composite Slider with stainless steel release lever mechanism** allows cleaning access from the inside of the building to comply with BS8213-Part 1:2004
- Automatically resets to the fire escape mode when the window is closed
- Available in ferritic 430* and austenitic 304* stainless steel for enhanced corrosion resistance
- 10 year guarantee (details available upon request)



▼ FULLY OPEN
Maximum 90° opening angle



▼ RELEASE MECHANISM
Resets to normal mode after cleaning



▲ Compliant with FENSA requirements
* Standard Ferritic (was 430) steel to BS EN ISO 10088/2 Grade 1.4016 or Austenitic (was 304) stainless steel to BS EN ISO 10088/2 Grade 1.4301 for enhanced corrosion resistance.



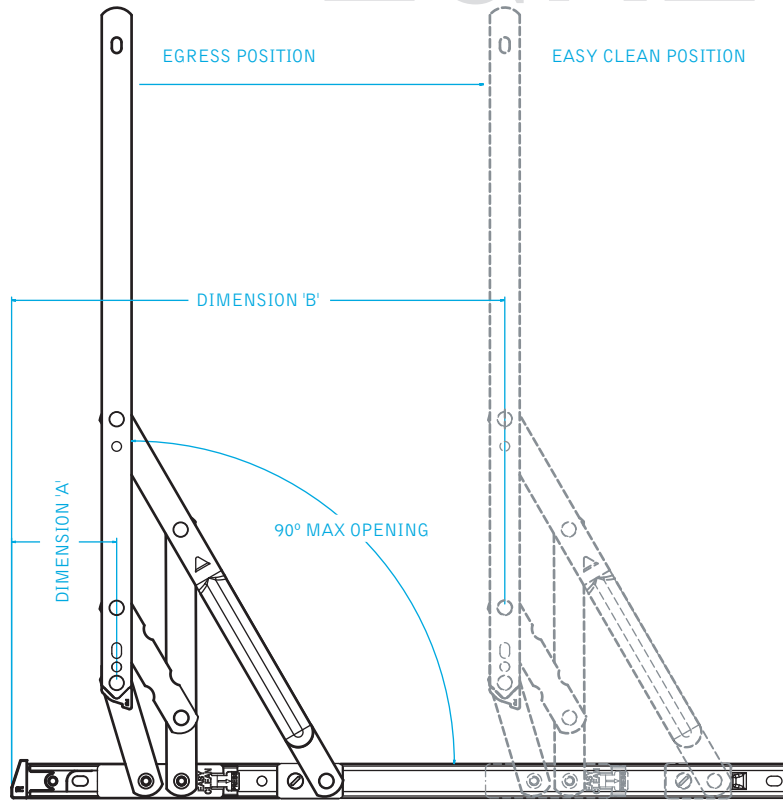
DEFENDER EGRESS

Product Specification

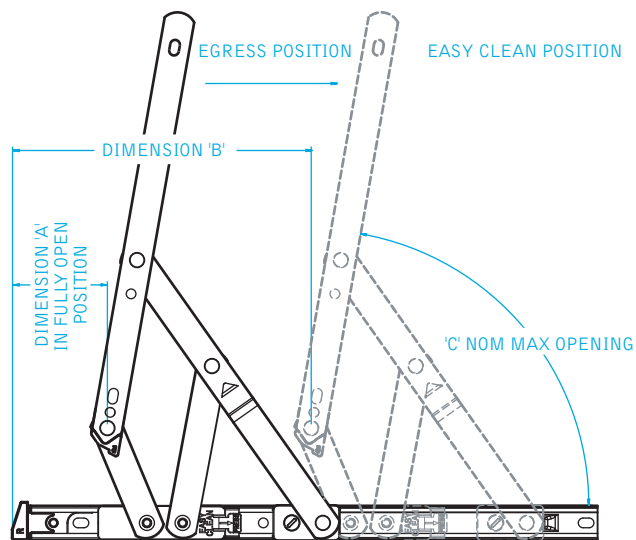
PRODUCT SPECIFICATION

- **New slot hole slot** format will provide the ability to adjust the vent more easily
- **Die cast support plate in bottom slider** ensures consistent performance
- **New screw fixing in the centre of the track**, thus reducing vent drop
- **12" side hung, easy clean** version also available, opening to 80°
- **Drilling jigs for all sizes are available to order**

Note: Specific Egress pull-in wedges should be used with this hinge.



HINGE SIZE- 413mm NOM (16")
 16" SIDE HUNG EASY CLEAN DEFENDER HINGE



HINGE SIZE-310mm NOM (12")
 12" SIDE HUNG EASY CLEAN DEFENDER HINGE

DEFENDER EGRESS

Hinge Size (Side Hung) (in/mm)	Max Vent Weight (Kg)	Max Vent Width (mm)	Min Vent Width (mm)	Dimension 'A' (mm)	Dimension 'B' (mm)	Max. Opening Angle 'C' (+/- 2.5°)
12/310	22	600	300	54	163	80°
16/413	24	700	400	57	268	90°



Due to our policy of continual improvement we reserve the right to alter specifications without notice. It is the responsibility of the window manufacturer to ensure that the finished window meets the required performance and safety specification.

All transactions are subject to our standard conditions of supply, which are available on request.

DEFENDER PLUS

Introducing the NEW Defender Plus Heavy Duty Side Hung Hinge

Key criteria of the Defender Plus are its long life and sustained high performance. This heavy duty domestic hinge range offers the benefit of an increased vent carrying capacity and is available in high grade austenitic stainless steel for enhanced corrosion resistance. The Defender Plus is an ideal solution for large and heavy vents.

- Asymmetric location system for reliable and accurate closure
- Ability to carry a load of up to 40kg side-hung
- Side hung variants feature a hole-slot-slot vent fixing configuration for ease of adjustment
- Improved weather sealing and draught proofing performance from asymmetrical vent arm form
- Enclosed end cap to prevent ingress of debris and provide increased cavity tolerance
- Long and reliable working life tested to 30,000 full cycles
- Adjustable friction cam in slider
- Available in 13mm stack height

With the developments in glazing (e.g. acoustic glass, triple glazing) creating a need for hinges capable of carrying ever increasing loads, the Defender Plus offers a solution in a uniquely engineered domestic side hung hinge, with increased carrying capacity to suit the growing demands of the market.



EDSH16A

austenitic
304

Securistyle Ltd

Kingsmead Industrial Estate, Princess Elizabeth Way
Cheltenham, Gloucestershire GL51 7RE, UK

Rev 2 Feb '09

12
YEAR GUARANTEE



BS EN ISO 9001
Cert. No 903105

Tel: +44 (0) 1242 221200

Fax: +44 (0) 1242 228194/520828

E-mail: info@securistyle.co.uk
Website: www.securistyle.co.uk



DEFENDER **PLUS**

Part Code	Stack Height (mm)	Max Vent. Weight (kg)	Min Vent Width (mm)	Min Vent Height (mm)	Max Vent Width (mm)	Max Vent Height (mm)	Opening Angle
Side Hung							
EDSH16A	13	40	400	-	1000	-	60°

austenitic
304

Securistyle Ltd
Kingsmead Industrial Estate, Princess Elizabeth Way
Cheltenham, Gloucestershire GL51 7RE, UK

12
YEAR GUARANTEE



BS EN ISO 9001
Cert. No 905105

Tel: +44 (0) 1242 221200
Fax: +44 (0) 1242 228194/520828

E-mail: info@securistyle.co.uk
Website: www.securistyle.co.uk

DEFENDER PLUS

Introducing the NEW Defender Plus Heavy Duty Top Hung Hinge

Key criteria of the Defender Plus are its long life and sustained high performance. This heavy duty domestic hinge range offers the benefit of an increased vent carrying capacity and is available in high grade austenitic stainless steel for enhanced corrosion resistance. The Defender Plus is an ideal solution for large and heavy vents.

- Asymmetric location system for reliable and accurate closure
- Ability to carry a load of up to 50kg top-hung
- Top hung hinge features slot-hole-slot vent fixing configuration for ease of adjustment and guaranteed fixing into reinforcement on PVC-u window frames.
- Improved weather sealing and draught proofing performance from asymmetrical vent arm form
- Enclosed end cap to prevent ingress of debris and provide increased cavity tolerance
- Long and reliable working life tested to 30,000 full cycles
- Adjustable friction cam in slider
- Available in a highline variant for deeper profiles with cavities between 16mm and 18mm

With the developments in glazing (e.g. acoustic glass, triple glazing) creating a need for hinges capable of carrying ever increasing loads, the Defender Plus offers a solution in a uniquely engineered domestic top hung hinge range, with increased carrying capacity to suit the growing demands of the market.



EDTH24

austenitic
**304
430**
ferritic

Securistyle Ltd

Kingsmead Industrial Estate, Princess Elizabeth Way
Cheltenham, Gloucestershire GL51 7RE, UK

Rev.9 Feb '09



BS EN ISO 9001
Cert. No 903105

Tel: +44 (0) 1242 221200

Fax: +44 (0) 1242 228194/520828

E-mail: info@securistyle.co.uk

Website: www.securistyle.co.uk

DEFENDER **PLUS**

Part Code	Stack Height (mm)	Max Vent. Weight (kg)	Min Vent Width (mm)	Min Vent Height (mm)	Max Vent Width (mm)	Max Vent Height (mm)	Opening Angle
Top Hung							
EDTH24	13	50	-	850	-	1500	27°
EDTH24H6	16	50	-	850	-	1500	27°
EDTH24H7	17	50	-	850	-	1500	27°
EDTH24A	13	50	-	850	-	1500	27°
EDTH24H6A	16	50	-	850	-	1500	27°
EDTH24H7A	17	50	-	850	-	1500	27°
EDTH24-TV	13	50	-	850	-	1500	27°
EDTH24A-TV	13	50	-	850	-	1500	27°



austenitic
304
430
ferritic



BS EN ISO 9001
Cert No 903105

Securistyle Ltd

Kingsmead Industrial Estate, Princess Elizabeth Way
Cheltenham, Gloucestershire GL51 7RE, UK

Tel: +44 (0) 1242 221200

Fax: +44 (0) 1242 228194/520828

E-mail: info@securistyle.co.uk
Website: www.securistyle.co.uk